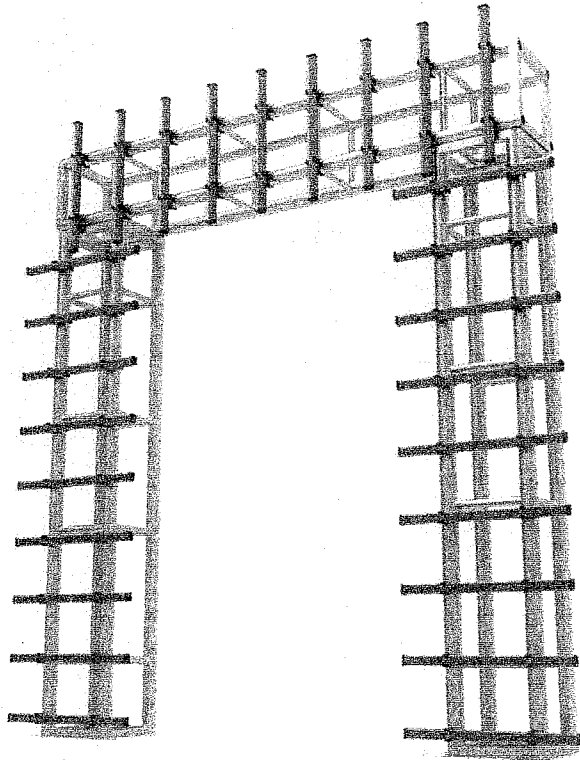


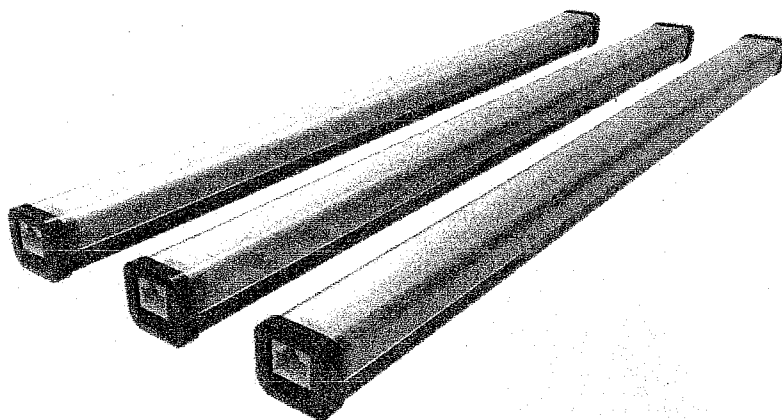
# LED Pixel D-TUBE



# INTRODUCTION

LED pixel D-tube is a flexible and innovative solution for the creation of scenography set with dynamic and graphic contents. led pixel d-tube is composed by tube and controller. Three size of the led pixel D-tube ,with different pixel ,you can depend on your idea to creat it .Whatever any shape you like it ,you can creat it by different spare part .For the controller where through the LCD user interface, you can assign a DMX address, or activate the Auto and Master / Slave. And you also can use the sofeware madrix /arkaos to make programs you want . The flexible design allows the D-tube to be used flexibly and creatively, allowing t o create spectacular forms or applications of any kind. led pixel D-tube is a versatile and suitable for a variety of applications such as TV studios, clubs, fairs, showrooms, and any type of fixed installation.

# 1 . Technial specifications -LED PIXEL D-TUBE



Type :PN-700A-30/50/100

Length : 30cm / 50cm / 100cm

LED : RGB Full Color ,SMD5050

8pcs / 16pcs / 32pcs

Power : 2W / 4W / 8W

Pixel Pitch : 25/28/30 mm

Working Voltage : DC 24V

Material color : Matt black ,matt white ,Clear

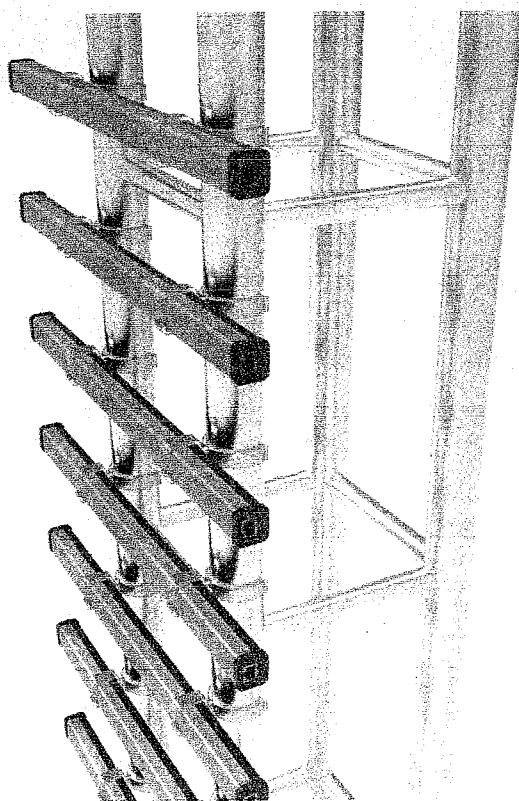
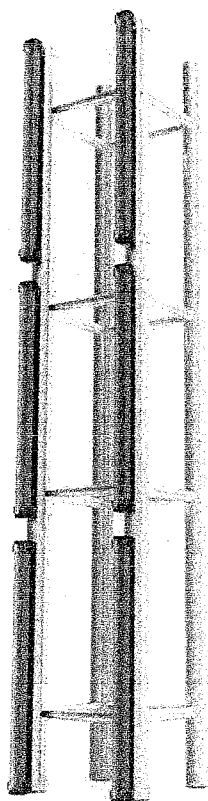
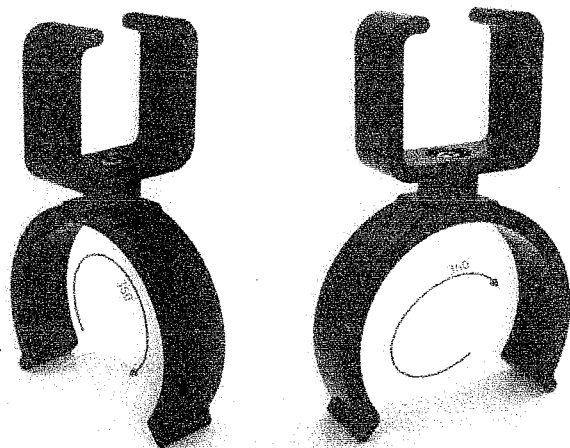
Net Weight : 80g /120g /240 g

Input :Ethnet Rj45

Indoor Used

# 2.Installation Mode:

- Truss-Tache



### 3. Technial specifications -controller

Power supply : AC100v~240V,50HZ/60HZ

Powercon input / output jack

Power : 200w

Output :Rj45\*4

Operation Mode : Automatic,MA-SL, DMX ,ArtNet, KlingNet

Control System : Madrix ,Arkaos ,LCD Display

DMX channels : 8CH /480CH\*4

DMX Universe : 4 DMX Universe

Both DMX and Art-Net control protocol supported

Both Art Net and Kling Net Protocol

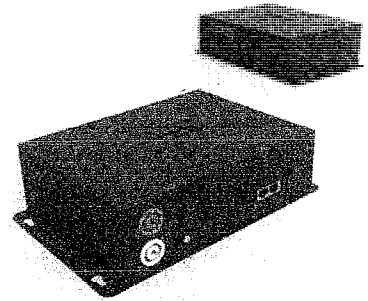
Auto Mode : built-in 30 programs with execution speed adjustment

Master/slave mode : for synchronized operation of more units linked in a chain

Maximum Connection : PN-700A-30 :80pcs

PN-700A-50 :40pcs

PN-700A-100 :20pcs



#### 3.1 Operation

The device can be used in the following modes:

stand-alone mode(30 programs in the controller SD card )

master/slave

with a DMX-512 controller.

Artnet /kling-net

## 3.2 Control Panel

Access the control panel functions using the four panel buttons located around the display:

Button	Function
MENU	access the menu
	return to a previous menu option
ENTER	select menu option
	store the current menu or option within the menu
UP	scroll through the menu options in ascending order
	increase value
DOWN	scroll through the menu options in descending order
	decrease value

## 3.3 Software Version

Press MENU to enter the menu.

Navigate to <Soft Ware Version> with UP or DOWN and press ENTER to confirm.

## 3.4 DMX Address :

The DMX mode it is sited 8 CH ,if you wan to use DMX controller to control it ,you only need to select the DMX address choose 001 ,then confirm it . You will running by DMX control .

● DMX-Protocol

Chanel	DMX-Value	Function
1	000-255	Dimmer (0-100%)
2	000-010	No Function
	011-255	Strobe ,increasing speed (0-100%)
3	000-255	Red (0-100%)
4	000-255	Green(0-100%)
5	000-255	Blue(0-100%)
6	000-015	No Function
	016-031	P1-Program1
	032-047	P2-Program2
	048-063	P3-Program3
	064-079	P4-Program4
	080-095	P5-Program5
	096-111	P6-Program6
	112-127	P7-Program7
	128-143	P8-Program8
6	144-159	P9-Program9
	160-175	P10-Program10
	176-191	P11-Program11
	192-207	P12-Program12

	208-223	P13-Program13
	224-239	P14-Program14
	240-255	P15-Program15
7	000-015	No Function
	016-031	P16-Program1
	032-047	P17-Program2
	048-063	P18-Program3
	064-079	P19-Program4
	080-095	P20-Program5
	096-111	P21-Program6
	112-127	P22-Program7
	128-143	P23-Program8
	144-159	P24-Program9
	160-175	P25-Program10
	176-191	P26-Program11
	192-207	P27-Program12
	208-223	P28-Program13
	224-239	P29-Program14
7	240-255	Pmix-Program1-29 in an endless loop
8	000-255	Increasing speed of the program setting under Channels 6 and 7



Please note : The channel 1 -dimmer function must be set to 0 in order to run the programs under channel 6 and channel 7 .

### **3.5 Auto Mode**

The device starts running in auto mode after connection to the mains. This mode allows you to use the device .

Connect the device to the mains to switch it on.

Press MENU to enter the menu.

Navigate to <Auto Mode> with UP or DOWN and press ENTER to confirm.

Select <PROGRAM> with UP or DOWN and press ENTER to confirm.

Select an option with UP or DOWN and press ENTER to confirm.

Select <SPEED> with UP or DOWN and press ENTER to confirm. Select a speed with UP or DOWN and press ENTER to confirm.

### **3.6 Master/Slave Mode**

#### **Notes**

The master/slave mode allows for connecting several devices to a single master device in a daisy chain.

All slave devices will then work synchronously with the master device.

Configure all slave units before connecting the master unit to the daisy chain.

Slave units:

Press MENU to enter the menu.

Navigate to <Slave Mode> with UP or DOWN and press ENTER to confirm.

Select <Slave Mode [YES]> with UP or DOWN and press ENTER to confirm.

Repeat these steps for all slave units.

Master unit

Connect the master device to the mains to switch it on.

Press MENU to enter the menu.

Navigate to <Slave Mode> with UP or DOWN and press ENTER to confirm.

Select <Slave Mode [YES]> with UP or DOWN and press ENTER to confirm.

Set the master unit to work in one of the running modes.

### **3.7 Network setting**

At the power-up ,the led pixel D-tube is detected and configured automatically by madrix or arkaos. Refer to your software manual for more information .

### **3.8 Universe export**

The controller have four output ,navigate to <1> will have only one output working ,navigate to <2> will have only two output working, navigate to <3> will have only three output working if you navigate to <4> ,it will working all output.